

NINO MIER
GALLERY

JAKE LONGSTRETH
SPRING WIND
MAY 9-20, 2020



NINO MIER GALLERY
7277 SANTA MONICA BLVD
LOS ANGELES, CA 90046



Nino Mier Gallery presents *Spring Wind*, a solo exhibition by Los Angeles based artist Jake Longstreth. Longstreth is well-known for his atmospheric landscapes of Southern California that capture the region's specific topography, flora and light. Longstreth marries a stark, contemporary realism with a landscape painter's sensitivity to mood and tone. The artist's distinct style is epitomized by the glowing, softly gradated skies that serve as a backdrop to his renderings of eucalyptus, pines, and the charred remnants of oak trees in Malibu. Step towards the paintings and you will see how subtly painterly they are—repetitive, terse brush strokes depict clumps of pine needles, short curvy strokes show eucalyptus leaves, various dabs and lines constitute bark.

Often, a foreboding and piercing light emphasizes the artist's attention to bleaker aspects of the idyllic environs: thick smog, raking shadows, sunbaked earth, slicing roadways and burnt branches. For *Spring Wind*, this underlying mood is exacerbated by our knowledge that summer is around the corner. Winds are not breezes after all—they announce that changes are afoot, new conditions imminent. Will the season bring barbecues and trips to the beach or scorching, weary days and wildfires? Probably a bit of both. Yet considering how tired yet resilient the trees in these paintings appear to be, we're likely in for a long, hot summer.

Jake Longstreth (b. 1977, Sharon, CT; lives and works in Los Angeles) received his MFA from California College of the Arts in San Francisco, CA. He has been included in numerous solo and group exhibitions at Gregory Lind Gallery, San Francisco; Crisp Ellert Museum, St. Augustine, Florida; Monya Rowe Gallery, New York; M Woods, Beijing; and Blum & Poe, Los Angeles



Installation shot of Jake Longstreth *Spring Wind* (May 9–20, 2020). Nino Mier Gallery, Los Angeles, CA



In Malibu (New Growth 2), 2020
Oil on muslin
84 x 57 in (85 x 57.25 in, framed)
213.4 x 144.8 cm (216 x 145.5 cm, framed)
(JLO20.002)









In Glendale (Pine 5), 2020
Oil on muslin
84 x 57 in (85 x 57.25 in, framed)
213.4 x 144.8 cm (216 x 145.5 cm, framed)
(JLO20.003)







In Glendale (Eucalyptus 5), 2020
Oil on muslin
84 x 57 in (85 x 57.25 in, framed)
213.4 x 144.8 cm (216 x 145.5 cm, framed)
(JLO20.004)







In Glendale (Eucalyptus 4), 2020
Oil on muslin
84 x 57 in (85 x 57.25 in, framed)
213.4 x 144.8 cm (216 x 145.5 cm, framed)
(JLO20.005)







In Glendale (Pine 4), 2020
Oil on muslin
84 x 57 in (85 x 57.25 in, framed)
213.4 x 144.8 cm (216 x 145.5 cm, framed)
(JLO20.006)



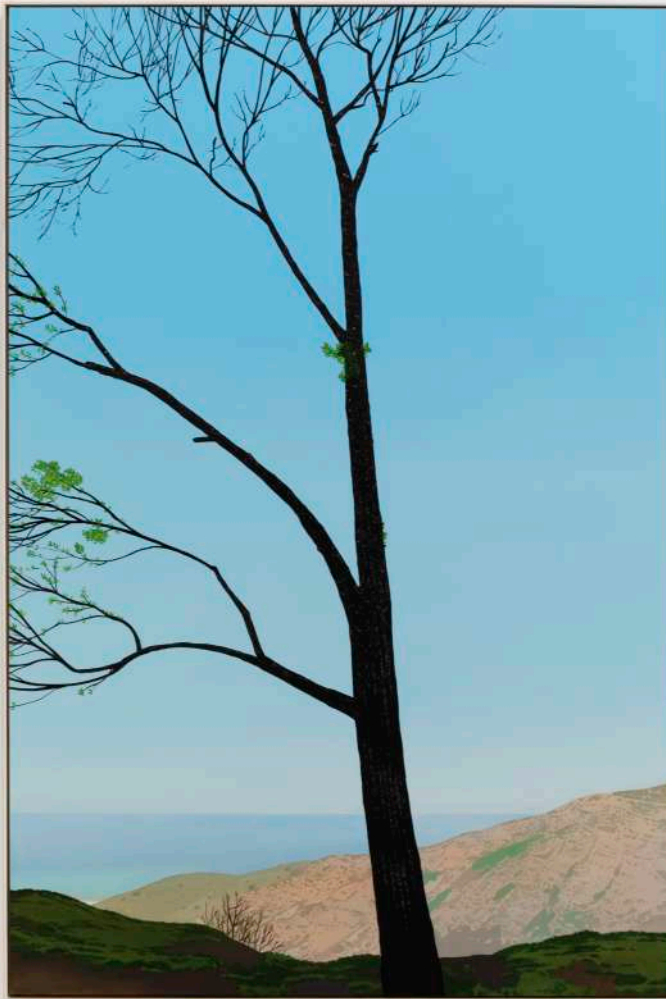




In Glendale (Eucalyptus 3), 2020
Oil on muslin
84 x 57 in (85 x 57.25 in, framed)
213.4 x 144.8 cm (216 x 145.5 cm, framed)
(JLO20.007)







In Glendale (New Growth 1), 2020
Oil on muslin
84 x 57 in (85 x 57.25 in, framed)
213.4 x 144.8 cm (216 x 145.5 cm, framed)
(JLO20.008)







SPRING WIND
DRAWINGS



Installation shot of Jake Longstreth *Spring Wind* Drawings (May 9–20, 2020). Nino Mier Gallery, Los Angeles, CA



Untitled Tree Study 6, 2020
ink on paper
14 5/8 x 11 3/8 in, framed
37.1 x 28.9 cm, framed
(JLO20.039)
SOLD



Untitled Tree Study 5, 2020
ink on paper
14 5/8 x 11 3/8 in, framed
37.1 x 28.9 cm, framed
(JLO20.040)
\$2,500.00
SOLD



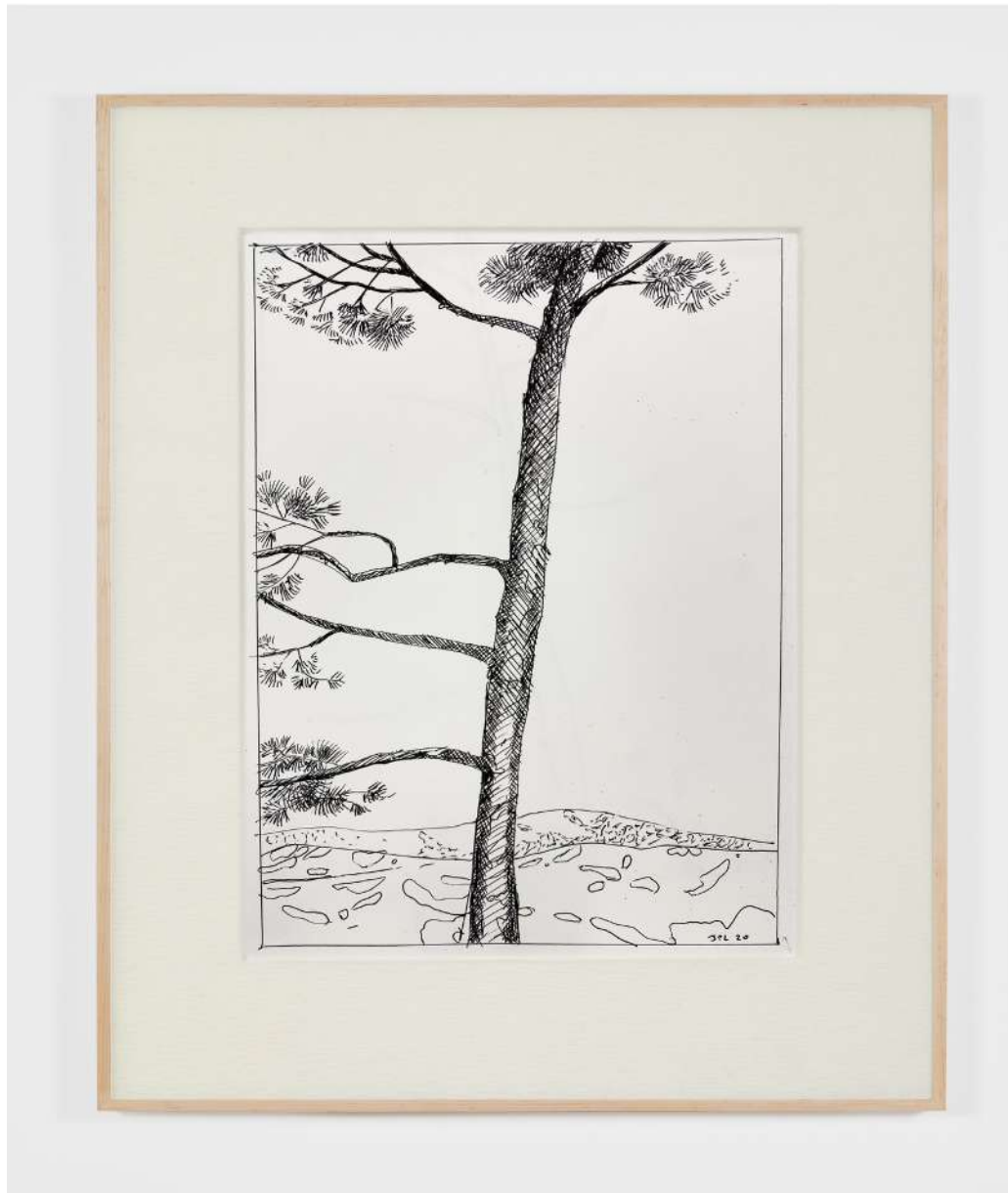
Untitled Tree Study 4, 2020
ink on paper
14 5/8 x 11 3/8 in, framed
37.1 x 28.9 cm, framed
(JLO20.041)
\$2,500.00



Untitled Tree Study 3, 2020
ink on paper
14 5/8 x 11 3/8 in, framed
37.1 x 28.9 cm, framed
(JLO20.042)
\$2,500.00
SOLD



Untitled Tree Study 2, 2020
ink on paper
14 5/8 x 11 3/8 in, framed
37.1 x 28.9 cm, framed
(JLO20.043)
\$2,500.00



Untitled Tree Study 1, 2020
ink on paper
14 5/8 x 11 3/8 in, framed
37.1 x 28.9 cm, framed
(JLO20.044)
\$2,500.00