



SURFACES

APRIL 14 - MAY 8, 2021

GINNY CASEY

ANDREW DADSON

ANNA FASSHAUER

MARK HAGEN

JESSIE HENSON

OTIS JONES

JOSÉ LERMA

ERICA MAHINAY

DASHIELL MANLEY

MATT PHILLIPS

EMANUEL SEITZ

JANA SCHRÖDER

MINDY SHAPERO

THOMAS WACHHOLZ

GARTH WEISER



SURFACES

GINNY CASEY, ANDREW DADSON, ANNA FASSHAUER, MARK HAGEN, JESSIE HENSON, OTIS JONES,
ERICA MAHINAY, DASHIELL MANLEY, JOSÉ LERMA, MATT PHILLIPS, JANA SCHRÖDER, EMMANUEL SEITZ,
MINDY SHAPERO, THOMAS WACHHOLZ and
GARTH WEISER

April 14-May 8, 2021

A visceral feeling is elicited when one encounters the surface of many things, not just a painting. With so much digital imagery being consumed today, we oftentimes lose that magnetic feeling one gets from seeing the surface of a painting, the ever so slight nuances of the material. In-person, we have the ability to navigate the space in which we consume a work of art and move in and out or from side to side to really take in what is in front of us. What does the surface, oftentimes created through the buildup of gesture and mark-making, tell us about the artist's intention? Was the maker expressing anger, joy, or passion? Is it meditative? Is the actual material, rather than the application, the reason for such brilliant radiance that attracts us to the surface? How was it applied and why was it applied in the first place? We are left with questions, oftentimes unanswered, and therein lies this interest of not just the surface, but also the very thing we see and feel.

There is an elegance to the surface, the different methods that can be achieved, as well as the "new" surface that is finally created. The exhibition investigates these various modes of surface and texture while delving into a deeper exploration of materiality and the artist's hand.



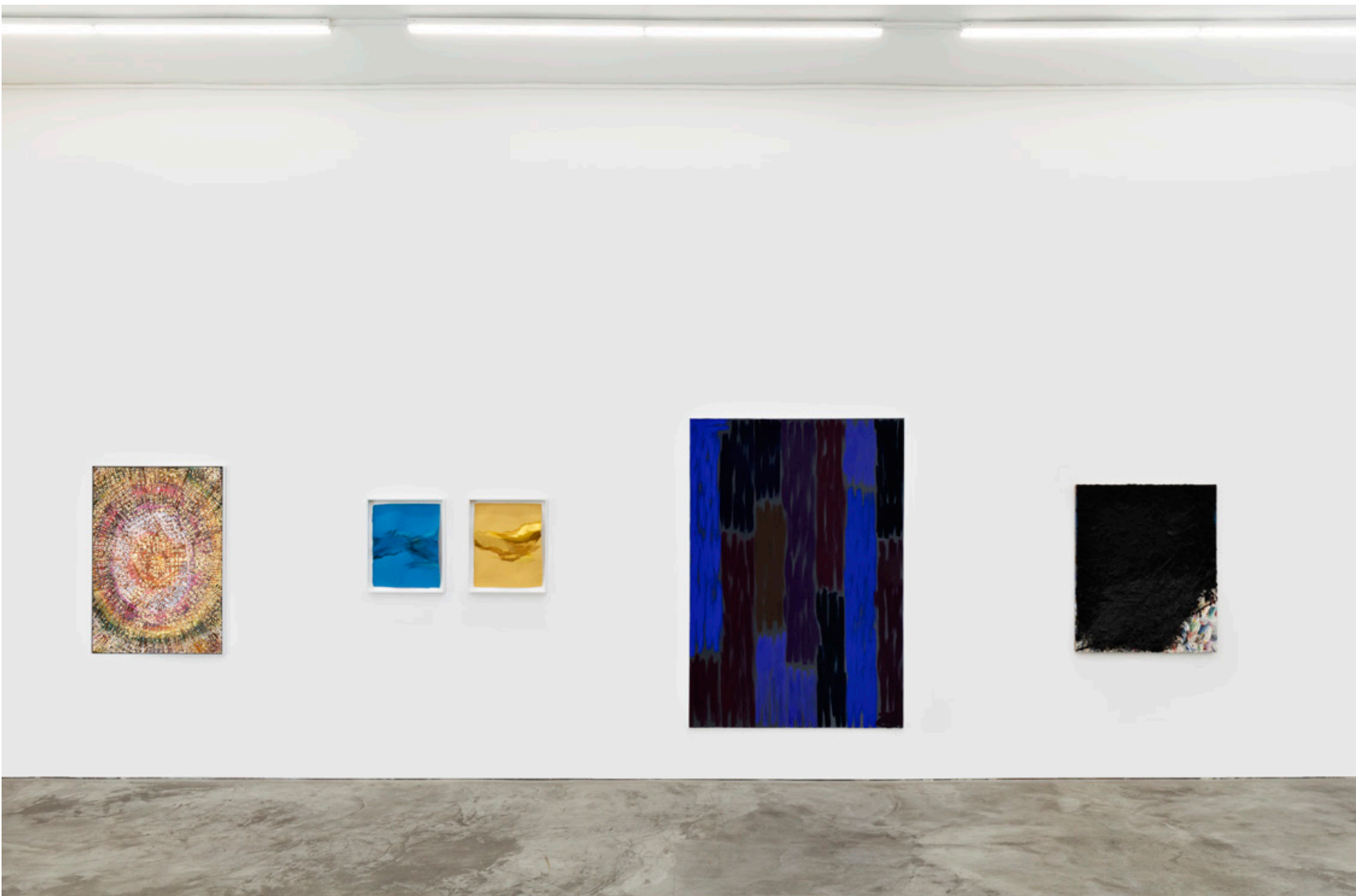
Installation View of *SURFACES* (April 14 - May 8, 2021)
Nino Mier Gallery, Los Angeles, CA



Installation View of *SURFACES* (April 14 - May 8, 2021)
Nino Mier Gallery, Los Angeles, CA



Installation View of *SURFACES* (April 14 - May 8, 2021)
Nino Mier Gallery, Los Angeles, CA

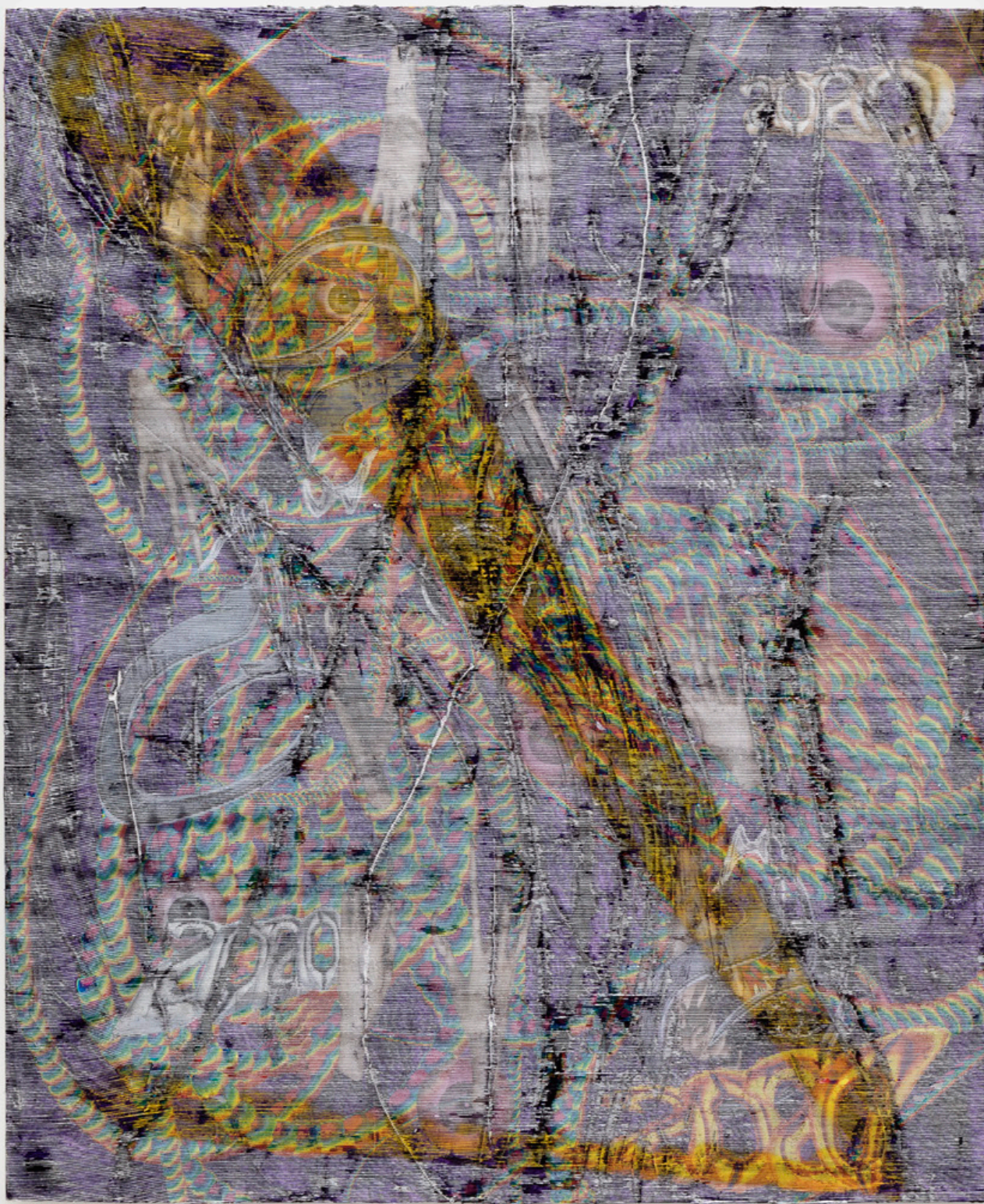


Installation View of *SURFACES* (April 14 - May 8, 2021)
Nino Mier Gallery, Los Angeles, CA



José Lerma
Comandante, 2021
Acrylic and silicon on burlap over board
61 x 81.3 cm
24 x 32 in
(JLE21.002)





Garth Weiser
the mover aka alien christ, 2020
Oil and digital media on canvas
73 x 60 in
185.4 x 152.4 cm
(GWE21.001)





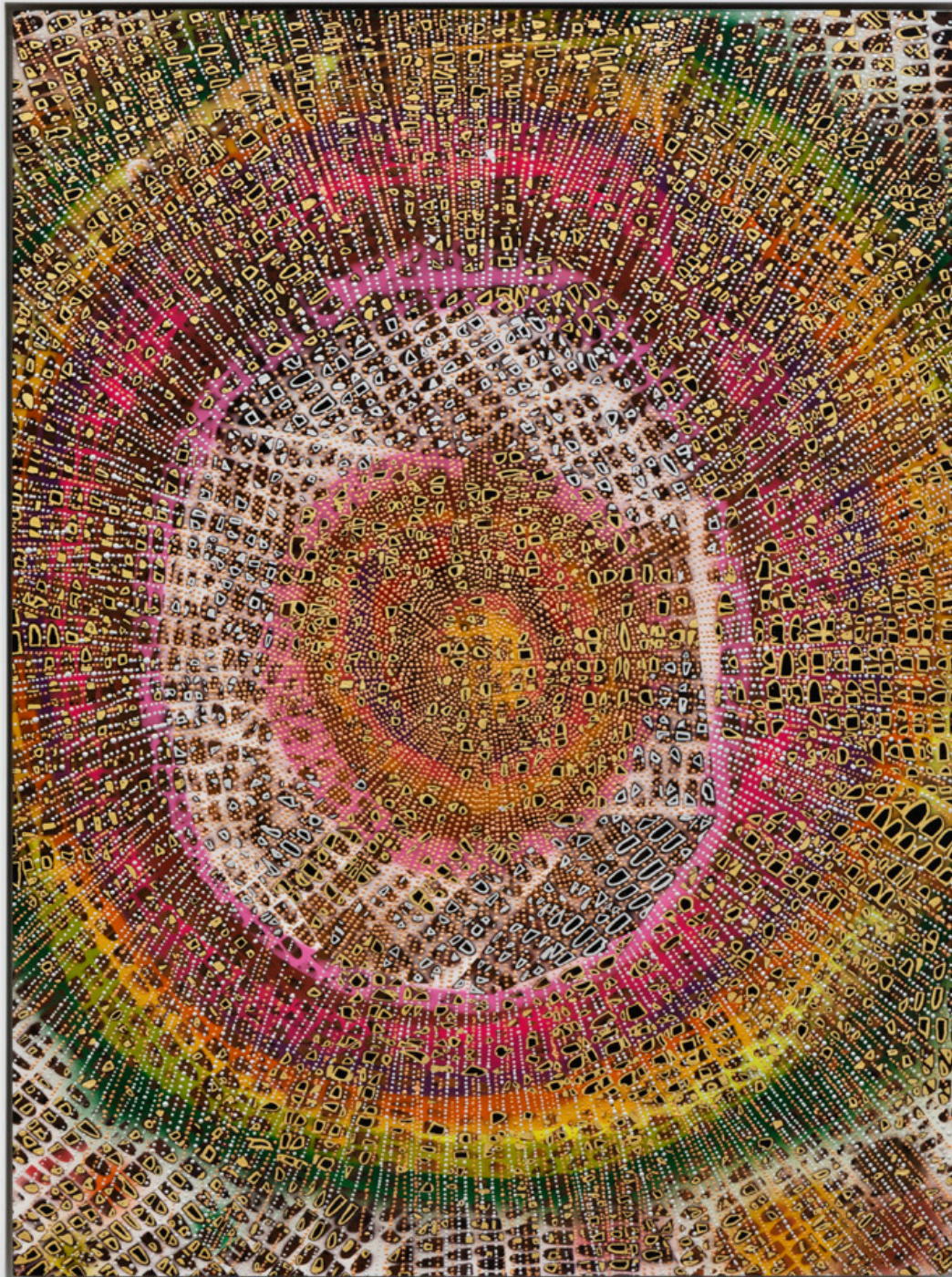
Mark Hagen
All summer in a day (cadmium red light & diarylide yellow), 2020
Cast acrylic paint and molding paste on burlap over panel
30 x 40 x 7 in
76.2 x 101.6 x 17.8 cm
(MHA21.001)





Anna Fasshauer
Blue Bronze, 2020
Aluminum and lacquer
33.75 x 30 x 2 in
86 x 76 x 5 cm
(AFA20.003)



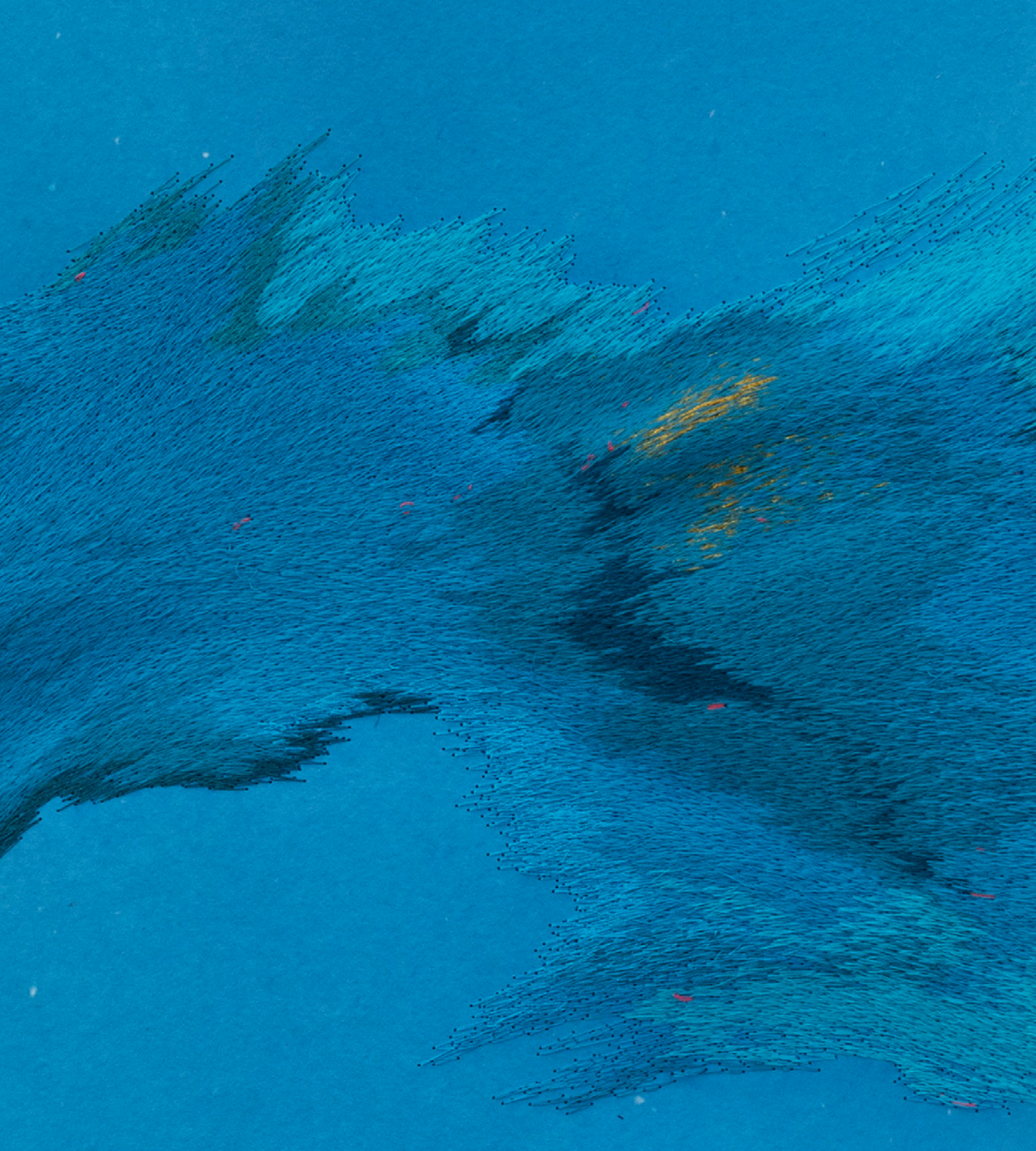


Mindy Shapero
Scar of Midnight Portal (copper, gold, and silver, radiating out), 2021
Spray paint, acrylic, copper, gold and silver leaf on paper
44 3/4 x 30 3/4 x 1 1/2 in
113.7 x 78.1 x 3.8 cm
(MS21.007)



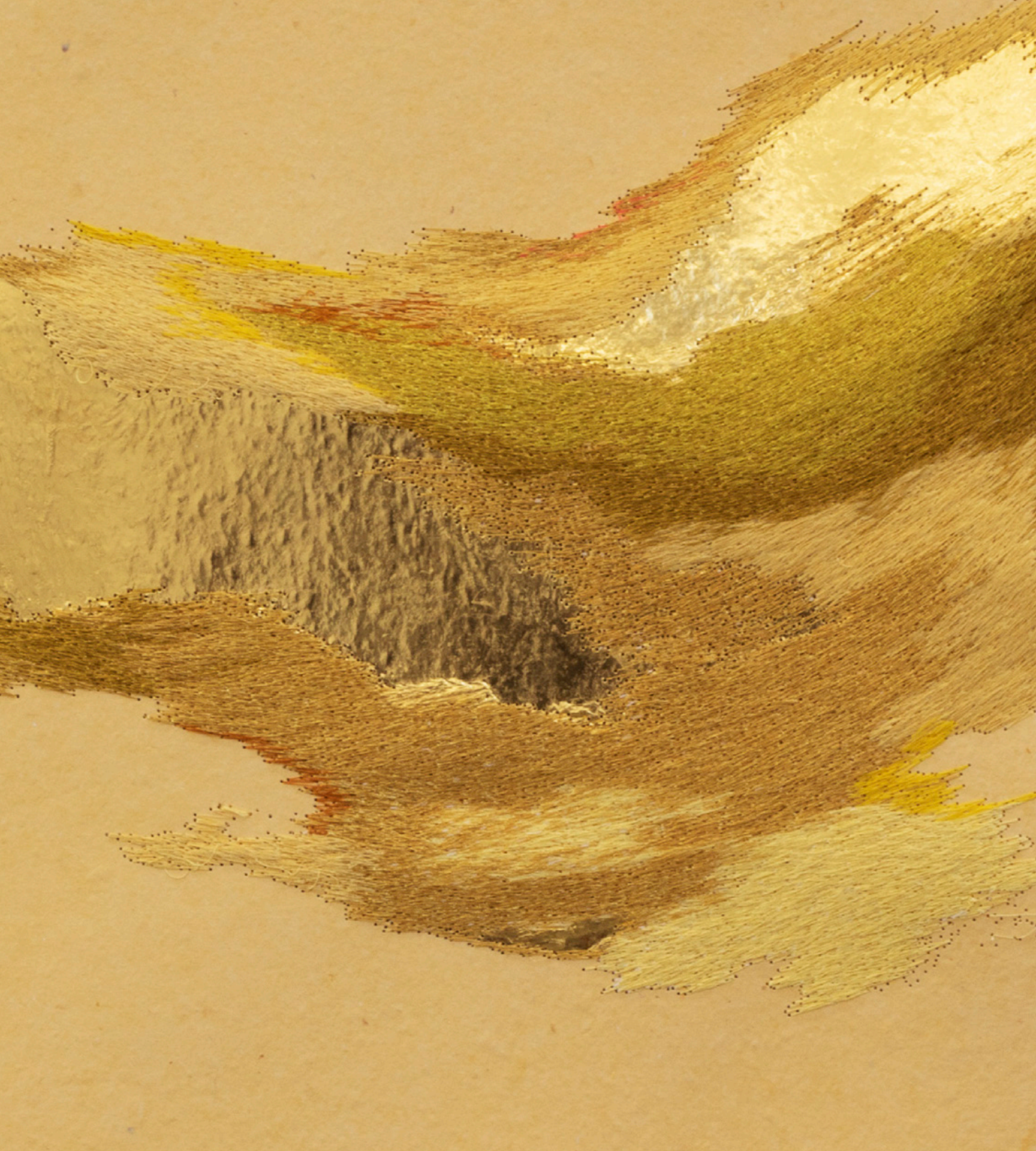


Jessie Henson
Untitled, 2017
Polyester and rayon thread on paper
22 1/8 x 18 1/8 x 2 in (framed)
56.2 x 46 x 5.1 cm (framed)
(JHE21.001)



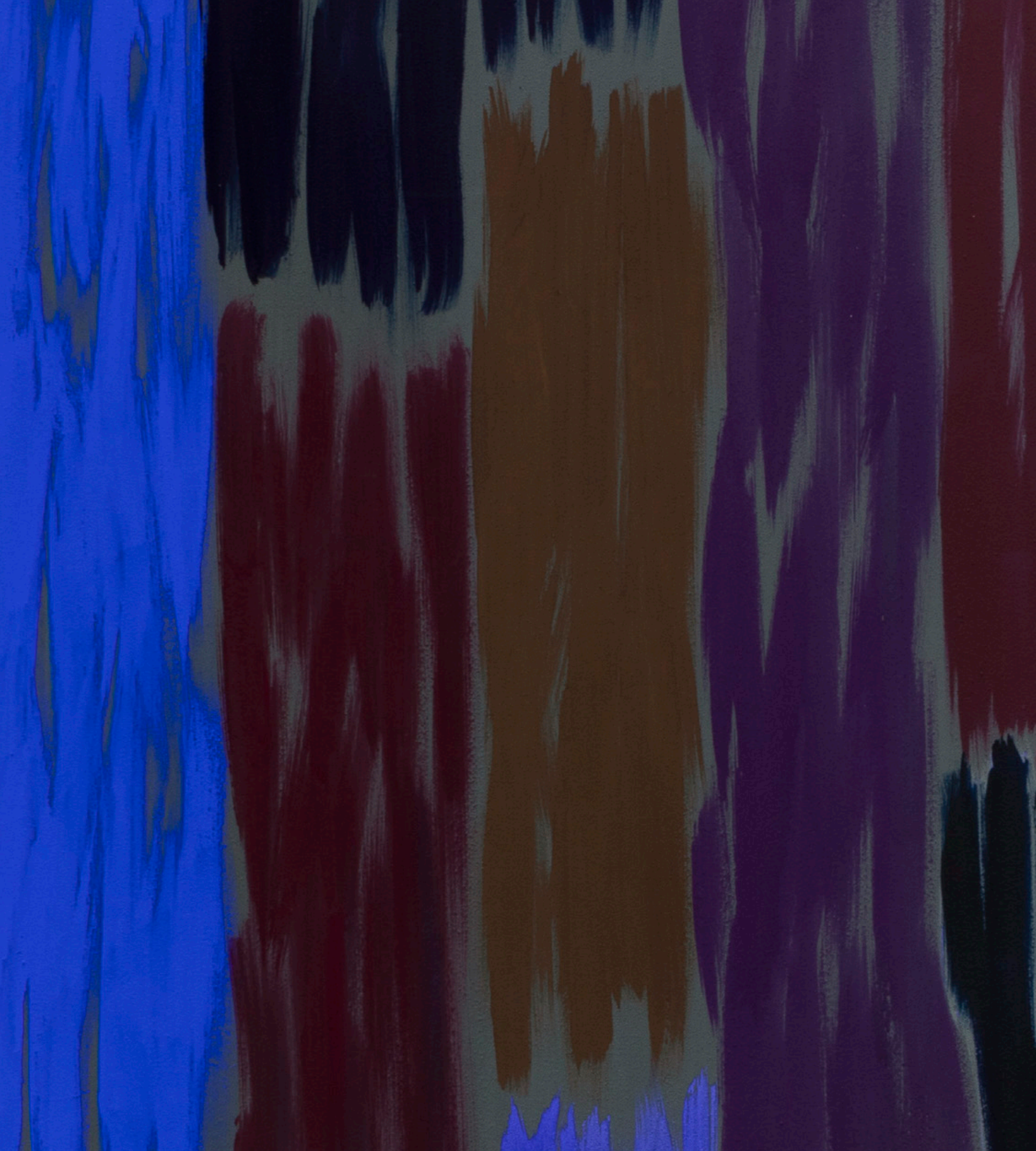


Jessie Henson
Untitled, 2020
24k gold with polyester and rayon thread on handmade paper
22 1/8 x 17 7/8 x 2 in (framed)
56.2 x 45.4 x 5.1 cm (framed)
(JHE21.002)





Emanuel Seitz
Untitled, 2021
Acrylic, marble powder, and pigment on canvas
72 7/8 x 49 1/4 in
185 x 125 cm
(ESE21.002)



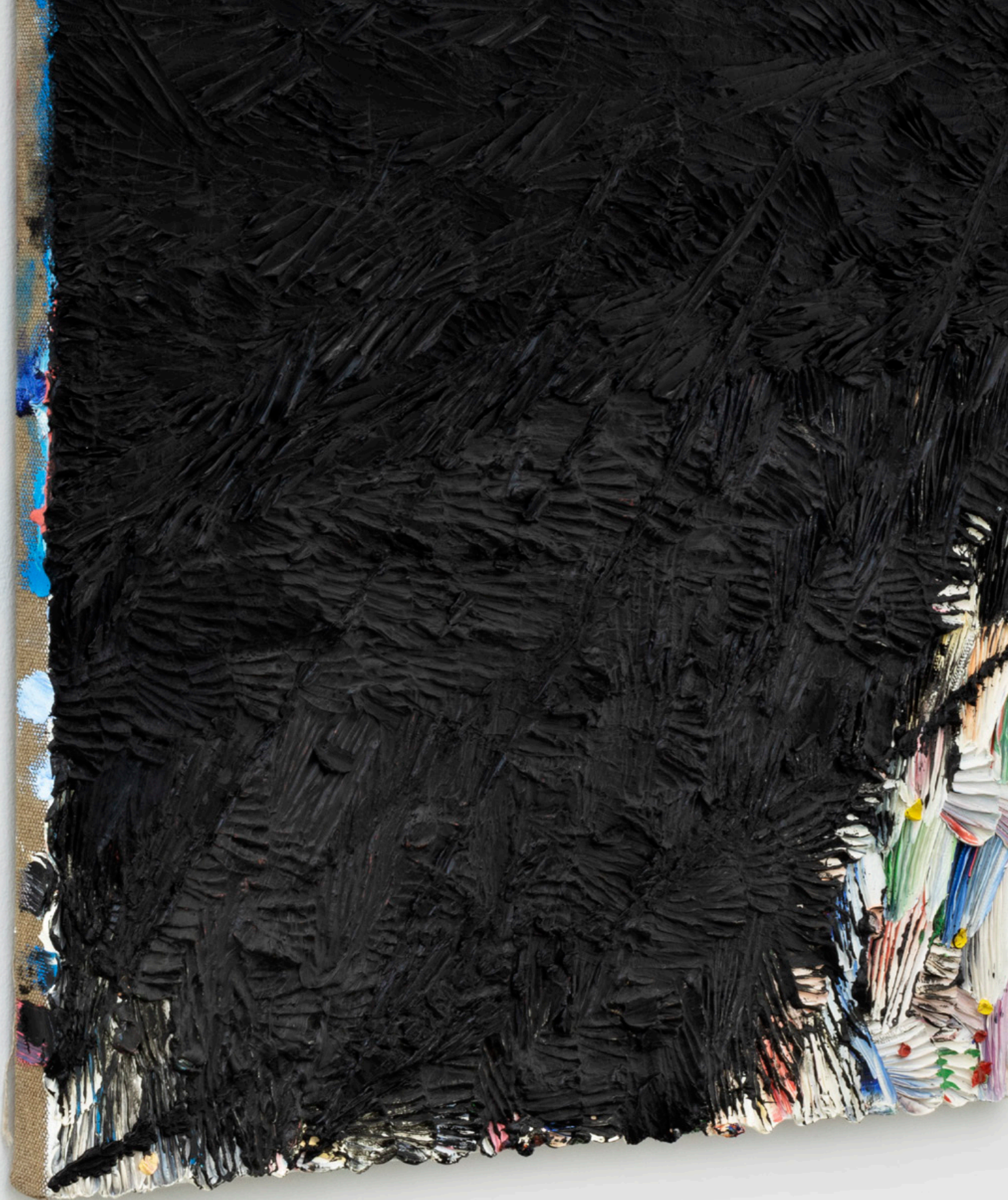


Emanuel Seitz
Untitled, 2021
Acrylic and pigment on canvas
72 7/8 x 49 1/4 in
185 x 125 cm
(ESE21.001)





Dashiell Manley
Empty places making faces, 2018-2021
Oil on linen
39 x 32 in
99.1 x 81.3 cm
(DMA21.001)





Installation View of *SURFACES* (April 14 - May 8, 2021)
Nino Mier Gallery, Los Angeles, CA



Installation View of *SURFACES* (April 14 - May 8, 2021)
Nino Mier Gallery, Los Angeles, CA



Installation View of *SURFACES* (April 14 - May 8, 2021)
Nino Mier Gallery, Los Angeles, CA



Installation View of *SURFACES* (April 14 - May 8, 2021)
Nino Mier Gallery, Los Angeles, CA

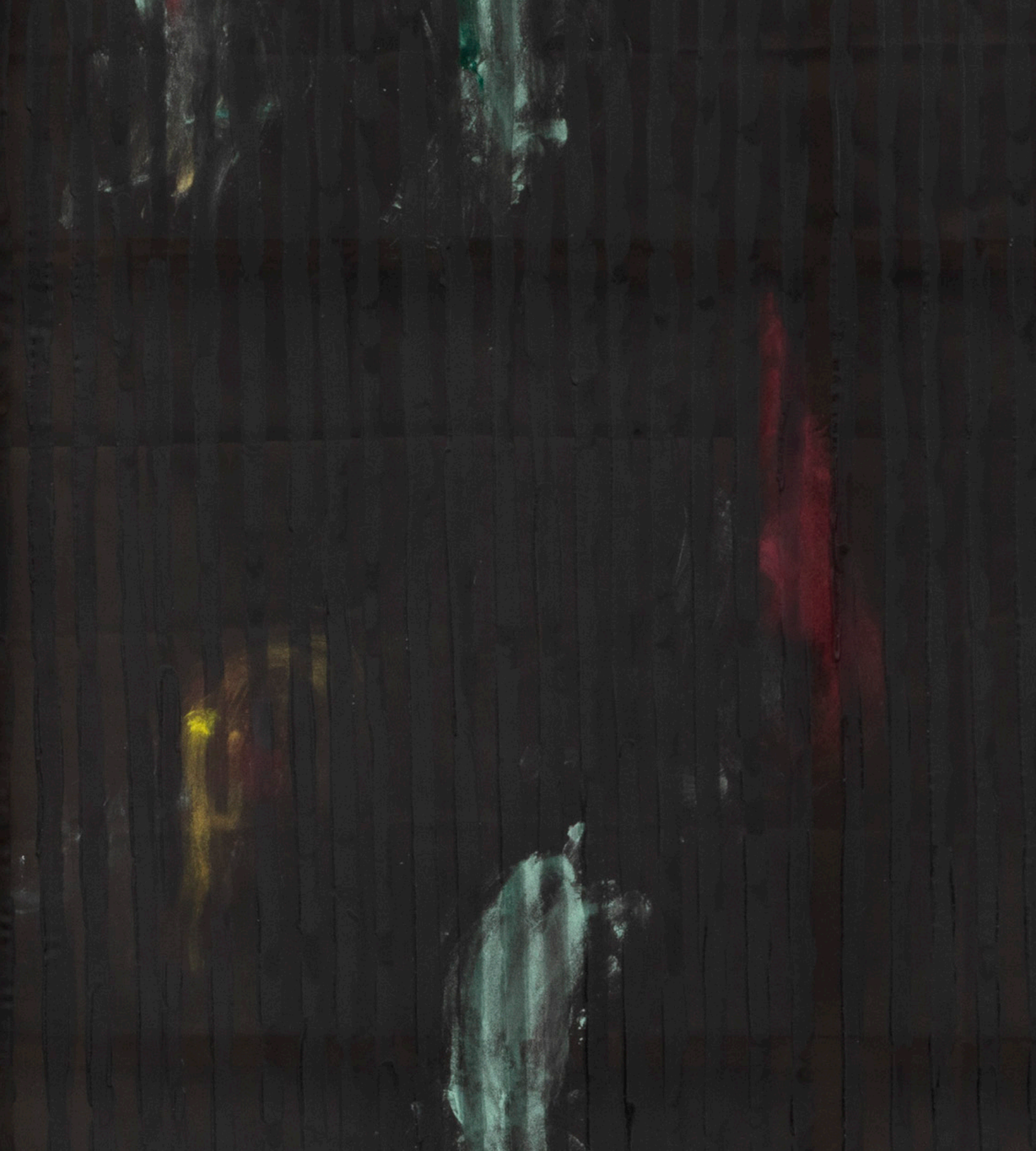


Erica Mahinay
Practice, I am, 2021
Raw pigment and acrylic on silk, poplar
48 x 25 in
121.9 x 63.5 cm
(EMA21.002)



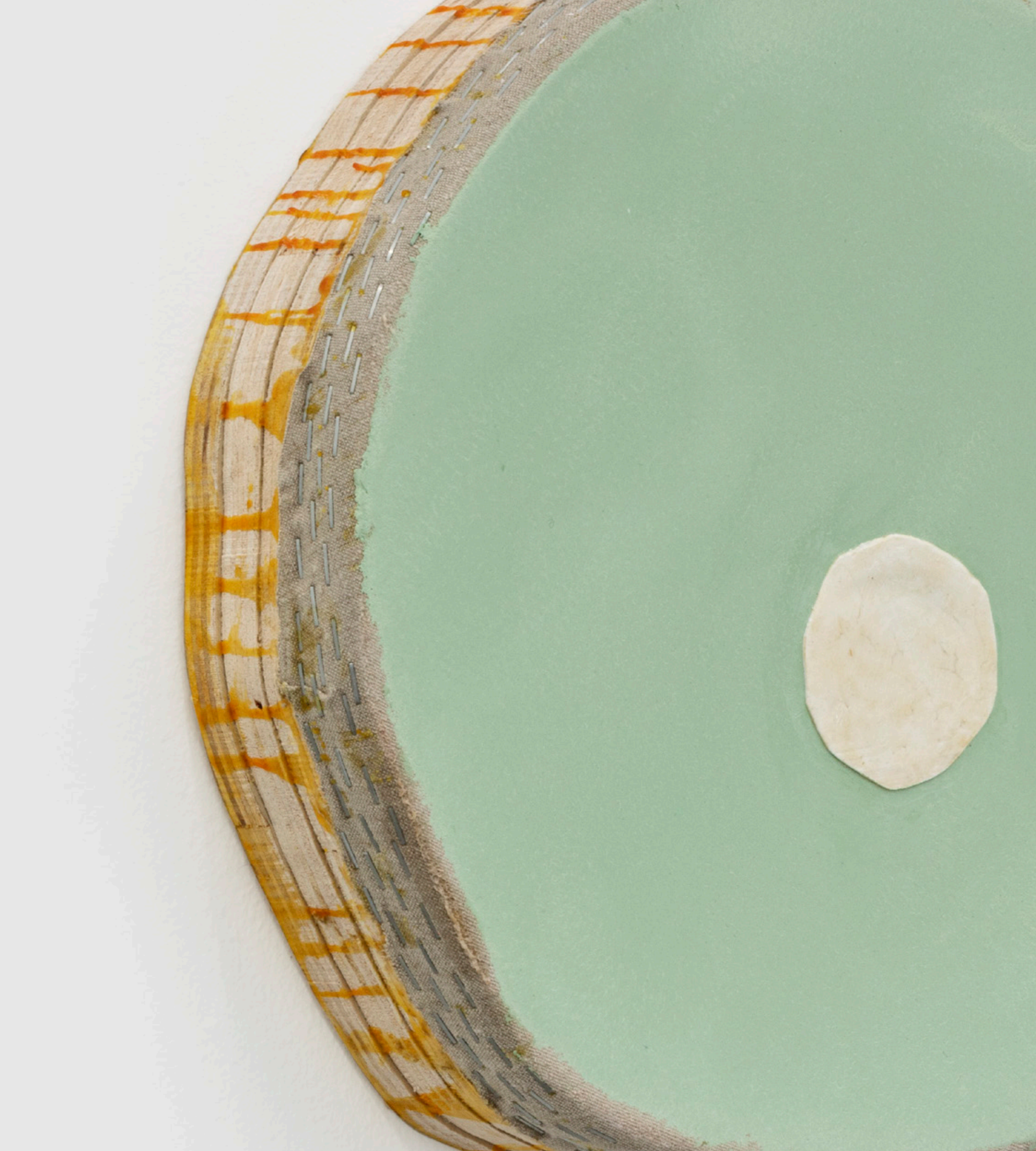


Erica Mahinay
Glimmers, Interruptions, Hummingbirds and Other Sensory Flutterings (Thank You, Ross Bleckner), 2021
Raw pigment and acrylic on silk, poplar
60 x 40 in
152.4 x 101.6 cm
(EMA21.001)





Otis Jones
Mint Green Round Shape with Ivory Circular Circle, 2021
Acrylic on linen
14 1/2 x 15 1/2 x 3 in
36.8 x 39.4 x 7.6 cm
(OJO21.001)





Thomas Wachholz
MONOCHROME A (Reibfläche), 2017
Red phosphorous, binder on wood
55 x 41 x 1.4 in
140 x 105 x 3.5 cm
(TW17.014)



Ginny Casey
Weeping Philodendron, 2021
Oil on canvas
27 x 24 in
68.6 x 61 cm
(GCA21.001)





Andrew Dadson
Spring Blue / White Restretch, 2021
Oil and acrylic on linen
17 x 14 x 3 in
43.2 x 35.6 x 7.6 cm
(ADA21.001)





Jana Schröder
Kinkrustation PB13, 2016
Papermaché, acrylic, and oil on canvas
94 1/2 x 78 3/4 in
240 x 200 cm
(JSR16.006)



José Lerma
Cafresi 2, 2021
Acrylic and silicon on burlap over board
61 x 76.2 cm
24 x 30 in
(JLE21.001)





Installation View of *SURFACES* (April 14 - May 8, 2021)
Nino Mier Gallery, Los Angeles, CA

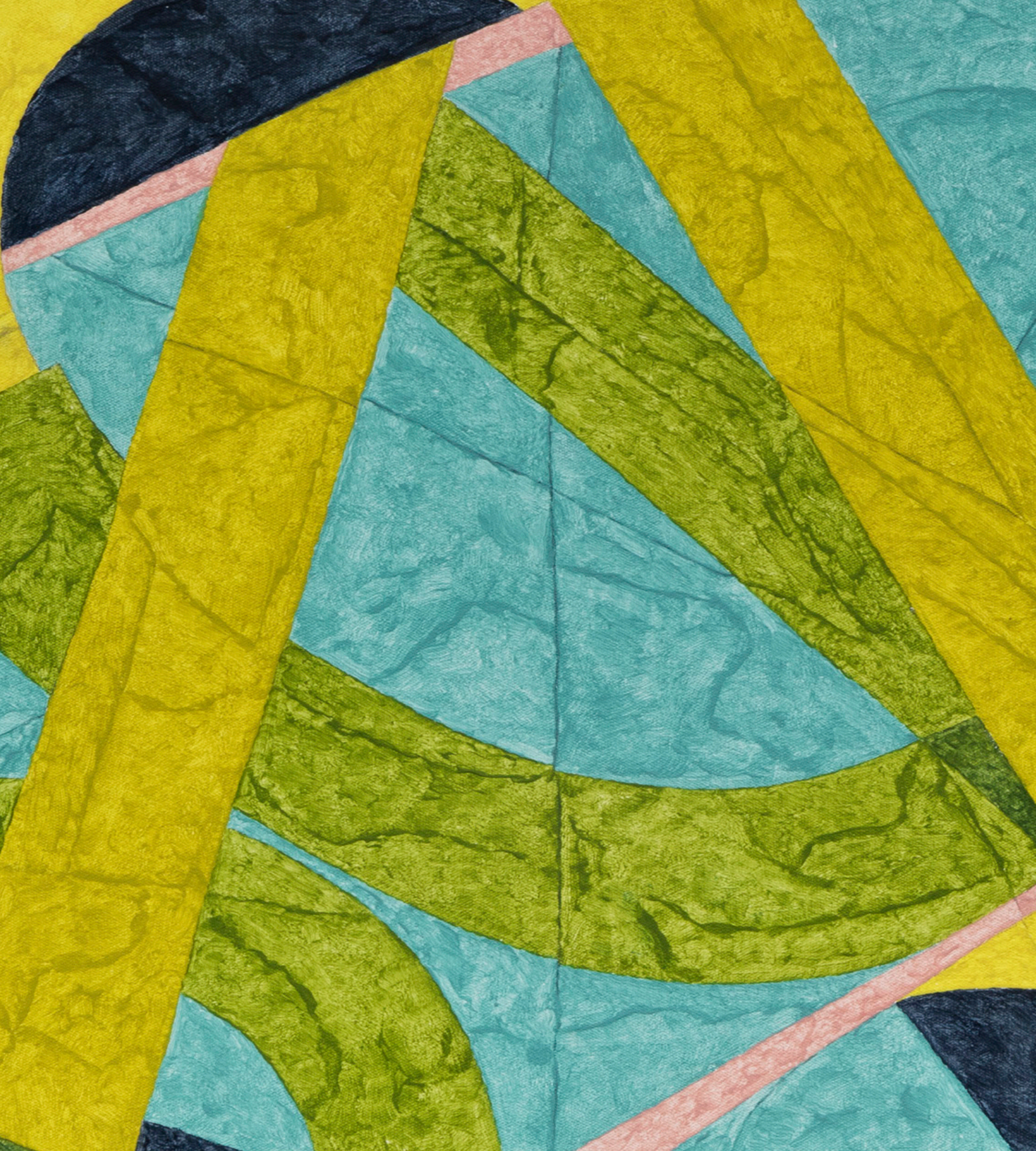


Matt Phillips
Untitled, 2021
Pigment and silica on canvas
30 x 24 in
76.2 x 61 cm
(MPH21.002)





Matt Phillips
Untitled, 2021
Pigment and silica on canvas
30 x 24 in
76.2 x 61 cm
(MPH21.003)





Matt Phillips
Marlin, 2021
Pigment and silica on canvas
30 x 24 in
76.2 x 61 cm
(MPH21.004)





Matt Phillips
Marlin, 2021
Pigment and silica on canvas
30 x 24 in
76.2 x 61 cm
(MPH21.004)



